



## INDEX

<b>INKATERRA RESERVA AMAZONICA "THE LODGE"</b>	<b>2</b>
Overview	2
Cabañas	2
Services & Facilities	4
Children & Families	4
Massage Hut	4
Attractions	5
Excursions	6
Suggested Itineraries	10
Private and Additional Services	10
Canopy Inkaterra	11
Recommendations	12
Quotes & Reviews	13
<b>TAMBOPATA &amp; PUERTO MALDONADO</b>	<b>15</b>
Description and Location	15
Weather	16
Flora & Fauna	16
Access	16
Wildlife Chart	17

## INKATERRA RESERVA AMAZONICA “THE LODGE”

### OVERVIEW

Inkaterra Reserva Amazonica, a simple elegant ecological lodge, graces the banks of Peru's Madre de Dios River. The lodge, composed of 34 well-built thatched cabañas and a main building, combines luxurious furnishings and delectable food with the simplicity of lantern-light and the rich sounds of the jungle.

Inkaterra Reserva Amazonica occupies the heart of a 40-square-mile private ecological reserve owned by Inkaterra, deep in the Amazon Rainforest. The lodge, adjacent to the Tambopata National Park, allows guests to experience the region's wealth of plant and animal life in an authentic setting; it opened in 1975, since then, it promotes innovative sustainable use of the Amazon Rainforest.

Native craftspeople built Inkaterra Reserva Amazonica's wooden cabañas in the Amazon's traditional Ese-Eja and Machigüenga styles. The main building consists of a two-story pavilion with cathedral ceiling that houses the dining room, the bar, and the main lounge. The 34 cabañas, raised on stilts with thatched palm roofs, are scattered around the property, with some overlooking the Madre de Dios River; the boutique, and the massage hut. The Eco-Media Center, which provides information and is the starting point of the excursions, stands at river's edge. All buildings in the complex are connected by tree trunk boardwalks.

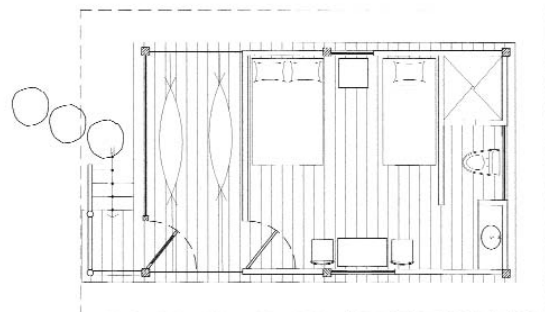
### CABAÑAS

TYPE	NUMBER OF CABAÑAS
Suite Amazonica	5
Superior Cabaña	12
Standard Cabaña	17
TOTAL	34

All cabañas feature three areas—a private terrace with woven hammocks, a bedroom (with beds surrounded by mosquito netting), and a private bathroom with filtered water. They are attractively furnished with log chairs, a writing table, umbrellas, lanterns, kerosene lamps, and a full set of amenities, including natural shampoo in blown-glass bottles, clay exfoliator, hand-made soap, and over-sized towels.

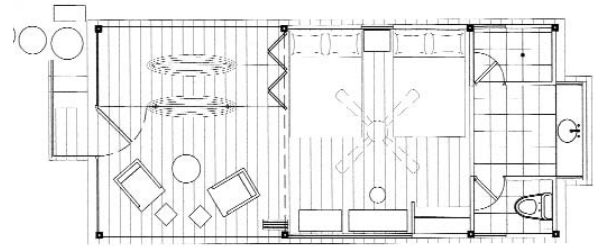
#### 17 Standard Cabañas

One double and one twin bed. Room size is approximately 29 sq. meters (313 sq. feet).



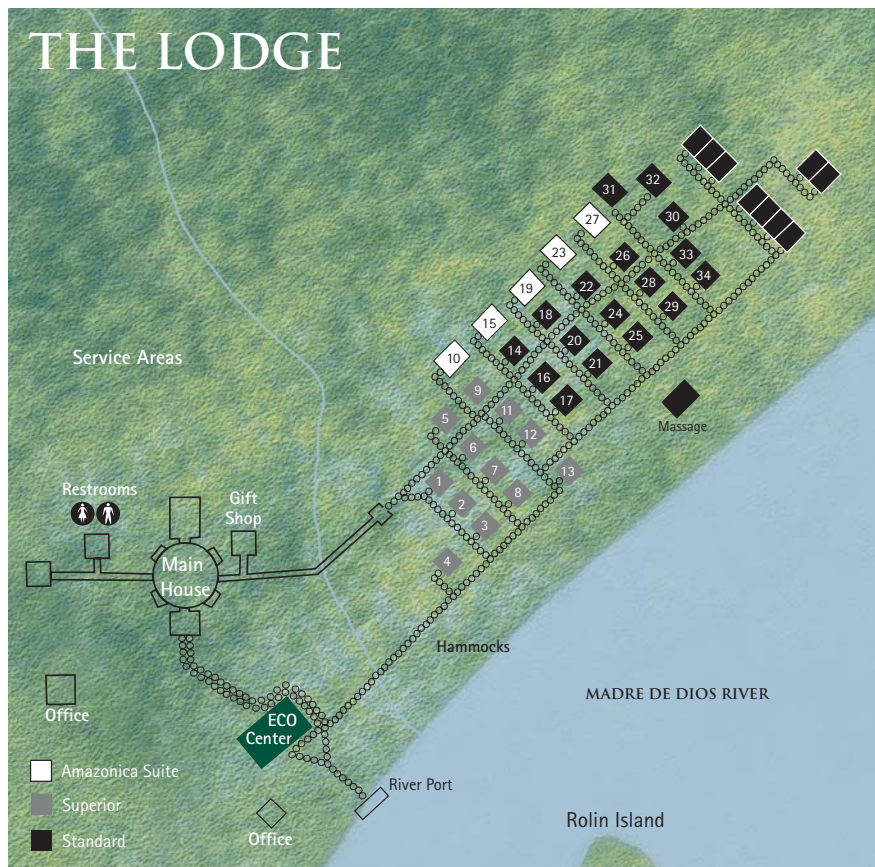
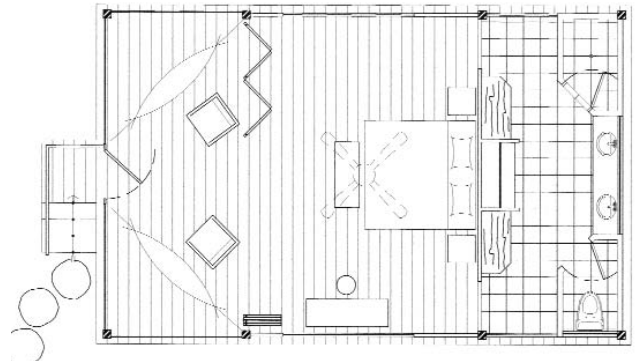
### 12 Superior Cabañas

A large cabaña with two double beds. The room has separate shower and toilet, hot water, electricity, and fan. House amenities also include citronella repellents, terry cloth bathrobes, and typical Andean sandals. Room size is approximately 41 sq. meters (434 sq. feet).



### 5 Suite Amazonica

Extra large cabaña with king-sized bed or two double beds. The room has separate shower and toilet with double washbasins, walk-in closet, hot water, electricity and fan. House amenities also include citronella repellents, terry cloth bathrobes, and typical Andean sandals. Room size is approximately 60 square meters (646 square feet).



## SERVICES & FACILITIES

- Trained professional interpreter guides in Spanish and English. We have limited access to Italian and French guides; pre-booking is required, and guides may not be available for all A-La-Carte Excursions: Fixed itineraries are also available in French, but in limited numbers, may be subject to additional charge, and require pre-booking.
- 10,000 hectares (24,710 acres) of private reserve and eight kilometers (six miles) of trails around the lodge. (See distribution map).
- The Amazon Pavilion, a circular, two-story lounge that features rustic furniture, includes an ample dining room and bar on the first floor, and provides loggias with big balconies and sofas on the second floor.
- The lodge's gallery, stocked with a variety of eco-friendly items, including insect repellents, basic over-the-counter medicines, film, batteries, aromatherapy products, and Inkaterra items such as t-shirts, caps, trousers, tote bags, and ponchos.
- The Eco-Media Center, at the entrance to the lodge, is the starting point of the excursions and contains complete information about projects, trips, and activities offered at the lodge.
- Equipment available for excursions: rubber boots, binoculars, lanterns, a small river fleet of three outboard motor boats, small outboard boats, three paddle boats, and a wooden tropical bus.
- Personalized welcome and radio communication.

## CHILDREN & FAMILIES

Inkaterra Reserva Amazonica is a family-oriented lodge that offers: additional beds, such as bunk beds, or bed railings (upon request); highchairs; child-friendly guides; a children's menu; and babysitting services (upon request and at an additional charge). Recommended excursions for children between the ages of five and 12 include: The Trail System, Butterfly Farm, Native Farm, Rolin Island and Ese'Eja Community, Canopy and Wetlands, Lake Sandoval, and Concepción.

## MASSAGE HUT

The massage hut, located on the banks of the Madre de Dios River, facing Rolin Island, is a great spot for watching Amazonian sunsets, adding to the relaxation of the traveler's experience. The hut is available from 9:00 a.m. to 9:00 p.m. and offers the following services:

**Traditional Massage:** consists of passive stretching and applied pressure using fingers, hands, feet, elbows, or knees along the energy lines of body.

Price: US\$30.00 for 45 min. / US\$20.00 for 30 min.

**Aromatherapy and Reflexology:** a classic soothing experience—a short foot massage and a relaxing foot bath, with a choice of Inkaterra's fragrances.

Price: US\$30.00

## ATTRACTIONS

The following attractions are available during the hotel's excursions:



### Footprints

Identify animal prints and learn to interpret them during your excursions.



### Birdwatching

Spot and identify some of the 550 different species of birds that reside in the Madre de Dios region. Some 355 types have been spotted in Inkaterra's Ecological Reserve.



### Survival Skills

Experiment with some of the most useful survival skills used among natives. Learn to use the longbow and the blowgun, to recognize which animals and plants are edible, and to identify local sounds, among other techniques.



### Fishing

Use local fishing techniques, identify the most popular fish in the Madre de Dios region, and if you wish, try them for dinner.



### Photography

Create wonderful pictures in this photographer's paradise.



### Medicinal Plants

Discover the world of medicine from a native's perspective. It has been calculated that natives use more than 4,000 different types of plants for medical purposes, only 40 percent of which have been scientifically investigated.



### Astronomy

Explore the astounding southern hemisphere, using special equipment.



### Tracking Ants

Identify different Amazon ant species, learn about their team-based working system, and gain an understanding of the importance of ants in the Amazon ecosystem. During his work at Inkaterra Reserva Amazonica, Harvard Professor Edward O. Wilson registered the world record of ant species in a single location (362 species).



### Canoe

Navigate creeks and lakes in native canoes, the most common vehicle in the Amazon forest. (max. 4 travelers)



### Native food

Taste the most important tropical fruits, vegetables, and animals that are part of the native daily diet.



### Butterflies

Spot the most common species of butterflies in the Madre de Dios region.

## EXCURSIONS

The lodge offers 13 A-La-Carte Excursions guided in Spanish and English, with a duration of 1/4 day (1.5 - 2 hours), 1/2 day (4-5 hours), or one day (7 hours), and at three levels of intensity: low (I), medium (II), and high (III). Travelers may create their own itinerary according to their preferences. All excursions are included in the rates except Lake Valencia and those that require special or private guided tours. Excursions may vary according to weather conditions, without previous notice.

**(NEW) LAKE VALENCIA:** Survival Experience in the Jungle. The adventure begins with a three-hour boat excursion, which takes you to Lake Valencia, where you will stop at a native farm to collect fruits and vegetables for your meals. After fishing for lunch on the lake, you will hike through thick primary forest and Brazil nut fields. The next morning, an easy one-hour walk takes you back to the banks of the Madre de Dios River, where you will boat back to the lodge.

**Duration:** 2 days

**Difficulty Level:** III

2 snacks, dinner & breakfast

**Attractions:** Footprints / Birds / Native Skills / Fishing / Photography / Astronomy / Canoe / Native Food.

**Price:** this excursion requires a \$400 additional payment and eight maximum persons per group.

**(NEW) GAMITANA CREEK:** Hike along the Gamitana Creek (three hours) to Loboyoc (two creek's junction), where you will continue down the creek by canoes (two hours) to Tres Marias (three creek's junction), learning about the creek ecosystem as you go. From Tres Marias a one-hour hike through primary and secondary forest takes you to Gamitana native farm. Return to the lodge by boat.

**Duration:** 1 day

**Difficulty Level:** III

Snack & Picnic

**Attractions:** Birds / Native Skills / Fishing / Photography / Canoe / Native Food.

**(NEW) TAMBOPATA NATIONAL RESERVE:** Walk in the Tambopata National Reserve. Travel by boat and trail (30 minutes and one hour) to Lake Sandoval, for an environmental interpretation of the area. Next, a two-hour walk through the rainforest takes you to Concepción Farm, for interpretation of collpas (clay licks) and jungle, followed by a visit to a botanical garden with more than 200 medicinal plants. Finish by paddling a canoe around the cochas<sup>1</sup> ecosystem, while learning the natural history of the Concepcion farm. Return to the lodge by boat.

**Duration:** 1 day

**Difficulty Level:** III

2 snacks & picnic

**Attractions:** Footprints / Birds / Native Skills / Photography / Canoe / Native Food / Medicinal Plants

**ESE'EJA NATIVE COMMUNITY:** Visit the Palma Real native community, which includes a 1.5-hour journey by boat and a four-hour guided visit to the community to learn about the Ese'Eja lifestyle. The visit to the Children's Forest is guided by Ese'Eja children, and is followed by a one-hour journey by boat to Angelos' native farm. Return to the lodge by boat.

**Duration:** 1 day

**Difficulty Level:** I.

Snack & picnic.

**Recommended for children**

<sup>1</sup> Cocha: Regional Peruvian term in Quechua language referred to lakes that are formed in depressions near the rivers. They can be considered as wetlands.

**(NEW) CANOPY AND WETLANDS:** Ascend the tower and cross the tree-top bridges that offer a birds-eye view of the dense rainforest—the newest excursion offered by Inkaterra. A five-minute boat transfer takes guests to the Canopy Inkaterra Interpretation Center, to learn about the tree canopy's construction and about Inkaterra Association's (ITA) conservation projects. The canopy walk lasts about 30 minutes, followed by a 15-minute walk to the wetlands, to learn about the floodable ecosystem.

**Duration:** 1/2 day

**Difficulty Level:** II

Snack

Canopy kit

**Recommended for children**

**Attractions:** Birds / Photography / Astronomy

**(NEW) CONCEPCION FARM:** Travel 30 minutes by boat to Concepcion, for a one-hour visit to the botanical gardens followed by a one-hour walk to the mammal collpas (clay licks), with guided interpretation. Walk to the private lake for a canoe ride and learn the history of the site.

**Duration:** 1/2 day

**Difficulty Level:** II

Snack.

**Recommended for children**

**Attractions::** Footprints / Birds / Native Skills / Ants / Canoe / Native Food / Medicinal Plants

**LAKE SANDOVAL:** Hike for one hour through the primary forest in Tambopata National Reserve, before reaching the beautiful oxbow lake called Sandoval. Paddle a rustic canoe and if the time is right, watch a glorious sunset. Local guides provide environmental interpretation of the reserve, forest, and lake. Transfers to and from the lodge are by boat.

**Duration:** 1/2 day

**Difficulty Level:** II

Snack

**Recommended for children**

**Attractions:** Birds / Photography / Ants / Astronomy / Canoe

**ROLIN ISLAND AND COMMUNITY:** Travel ten minutes by boat to Rolín Island, to learn about the island's ecosystem and about the project to protect endangered primates there. Take a brief transfer to Rolín Community, for a one-hour guided visit to learn about the local lifestyle and about Inkaterra's school project there. Return to the lodge by boat.

**Duration:** 1/2 day

**Difficulty Level:** I.

Breakfast or Snack

**Recommended for children**

**Attractions:** Footprints/ Photography / Ants

**TRAIL SYSTEM:** Walk through the trails inside the Inkaterra Ecological Reserve, while your guide tells you about the primary and secondary rainforest, its components, uses, and transformation by people, and its importance to the world. Approximately two-hour walk.

**Duration:** 1/4 day

**Difficulty Level:** I

**Recommended for children**

**Attractions:** Footprints / Birds / Native Skills / Ants / Medicinal Plants

**RIVER BY NIGHT:** Cruise the Madre de Dios River, while learning about the river ecosystem, the Amazon creeks, and the Southern Hemisphere sky. Approximately two-hour navigation, depending on weather and river conditions.

**Duration:** 1/4 day

**Difficulty Level:** I

**Recommended for children**

**Attractions:** Photography / Astronomy

**RAINFOREST BY NIGHT:** Walk in the Inkaterra Ecological Reserve and learn about the primary and secondary forest during the night. Approximately 2-hour walk.

**Duration:** 1/4 day

**Difficulty Level:** I

**Attractions:** Footprints / Birds / Astronomy

**BUTTERFLY FARM AT PUERTO MALDONADO:** Several of the 3,800 Peruvian species of butterflies are preserved here. Excursion in the city of Puerto Maldonado.

**Duration:** 1/4 day

**Difficulty Level:** I

**Recommended for children**

**Attractions:** Butterflies

**NATIVE FARM:** Take a 15-minute boat ride to a local native farm. During your one-hour guided visit, you will learn about native farming techniques and will taste tropical fruits and local tubers. Return to the lodge by boat.

**Duration:** 1/4 day

**Difficulty Level:** I

**Recommended for children**

**Attractions:** Native Fruits / Medicinal Plants

## SUMMARY OF EXCURSIONS

Excursion	Duration / Day				Level of Dif.	Meals	Attractions Included	Children
	1/4	1/2	1	2				
Lake Valencia				X	III	Snack (2) Picnic Dinner Breakfast	Footprints / Birds / Native skills / Fishing / Photography / Astronomy / Canoe / Native food	
Gamitana creek			X		III	Snack Picnic	Birds / Native skills / Fishing / Photography / Canoe / Native food	
Tambopata National Reserve			X		III	Snacks (2) Picnic	Footprints / Birds / Native skills / Photography / Canoe / Native food / Medicinal plants	
Ese'Eja community			X		I	Snack Picnic	Birds / Native skills / Photography / Native Food	Recommended
Canopy and Wetlands		X			II	Snack	Birds / Photography Astronomy	Recommended
Concepcion		X			II	Snack	Footprints/ Birds / Native skills / Ants / Canoe / Native food / Medicinal plants	Recommended
Lake Sandoval		X			II	Big Snack	Birds / Photography / Ants / Astronomy / Canoe	Recommended
Rolín Island and Community		X			I	Breakfast	Footprints / Photography / Ants	Recommended
Trail System	X				I		Footprints / Birds / Native skills / Ants/ Medicinal plants	Recommended
River by Night	X				I		Photography / Astronomy	Recommended
Rainforest by Night	X				I		Footprints / Birds / Astronomy	
Butterfly Farm	X				I		Butterflies	Recommended
Native Farm	X						Native food / Medicinal plants	Recommended

## SUGGESTED ITINERARIES

In addition to the flexible schedules, the lodge offers 5-days /4-nights, 4-days /3-nights and 3-days /2-nights suggested itineraries that include the following planned excursions:

3 DAYS / 2 NIGHTS			4 DAYS / 3 NIGHTS			5 DAYS / 4 NIGHTS		
DAYS	EXCURSION	DURATION	DAYS	EXCURSION	DURATION	DAYS	EXCURSION	DURATION
D.1	Arrival Lunch Trail System River by Night Dinner Presentation	1/4 D 1/4 D	D.1	Arrival Lunch Trail System River by Night Dinner Presentation	1/4 D 1/4 D	D.1	Arrival Trail System River by Night Dinner Presentation	1/4 D 1/4 D
D.2	Breakfast Lake Sandoval Lunch Canopy and Wetlands Dinner Presentation	1/2 D 1/2 D	D.2	Breakfast Rolin Island and Community Lunch Canopy and Wetlands Dinner Presentations	1/2 D 1/2 D	D.2	Breakfast Rolin Island and Community Lunch Canopy and Wetlands Dinner Presentation	1/2 D 1/2 D
D.3	Breakfast Butterfly Farm Departure	1/4 D	D.3	Breakfast Tambopata Dinner Presentation	1 D	D.3	Breakfast Tambopata Dinner Presentation	1 D
			D.4	Breakfast Butterfly Farm Departure		D.4	Breakfast Ese'Eja Community Dinner Presentations	1 D
						D.5	Breakfast Butterfly Farm Departure	1/4 D

## PRIVATE AND ADDITIONAL SERVICES

Private services at Inkaterra Reserva Amazonica are offered at an additional charge.

PRIVATE SERVICES	RATES
Private guide (for a maximum of 8 travelers): Spanish, English, French, and Italian	US\$ 50
German translator(for a maximum of 8 travelers) from 1 to 4 nights	US\$ 420 - US\$660
Private boat (for a maximum of 15 travelers) per day	US\$ 160
Lake Valencia Excursion (for a maximum of 8 travelers)	US\$ 400
Babysitting service	US\$ 20

## CANOPY INKATERRA

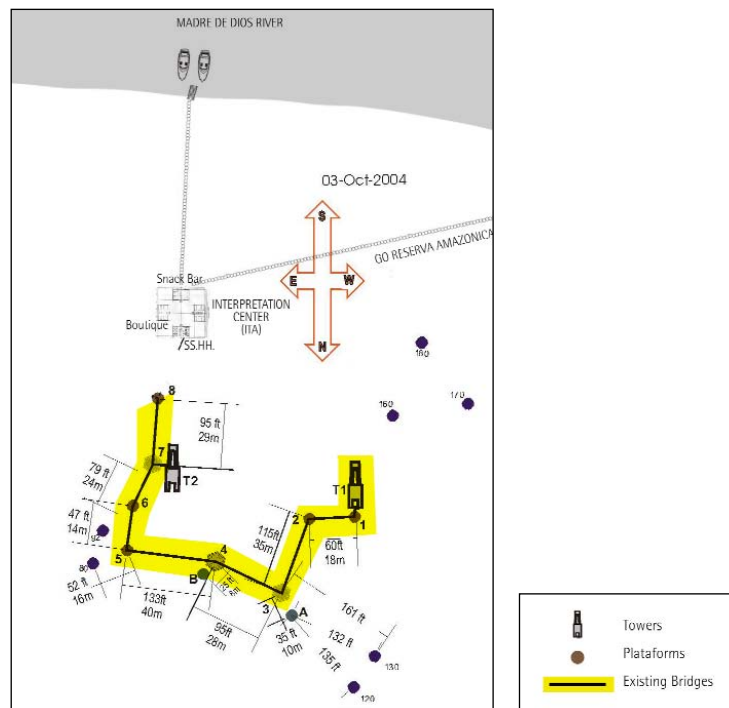
The Canopy Inkaterra takes visitors high atop the trees, giving them a bird's-eye view of the glorious rainforest ecosystem. This complex set of hanging towers, platforms, and bridges, offers glimpses of rare and unusual flora and fauna, impossible to see from the ground. The height of the hanging bridges, woven through the crowns of the tallest trees, assures unexpected vistas of this very special ecosystem.

The new canopy is situated close to the Inkaterra Reserva Amazonica lodge, on the Inkaterra Ecological Reserve (10,000 hectares; 24,700 acres), one hour downstream by motorized boat from Puerto Maldonado. The canopy is considered one of the most sophisticated such structures in the world, because of its camouflaged design and specialized construction, done entirely with ecological materials to avoid any negative impact in the environment.

The 344-meter (1,128 feet)-long system consists of seven hanging bridges; eight treetop observation platforms; and two impressive 29 meter (95 feet) tall towers. Canopy Inkaterra is one of the safest canopy walkways in the world, due to its special steel cables, the safety mesh on the sides of the walkways, and the two strong towers.

Proceeds from Canopy Inkaterra are managed by the NGO Inkaterra Association (ITA) for the conservation and development programs that they perform in Madre de Dios.

The Canopy Inkaterra owns the Inkaterra Canopy Interpretation Center which includes an interpretation room, store, first-aid kit, toilets, and a coffee shop.



## RECOMMENDATIONS

### Health and Vaccinations

Climate is tropical and the lodge is located in the rainforest, therefore mosquitoes and other insects such as spiders, beetles, ants, and centipedes are common. Yellow fever shots and malaria preventive drugs are not required, but would be a prudent precaution in a rainforest environment. Please consult your doctor at least a month before entering the Amazon Basin.

### Water

Inkaterra Reserva Amazonica has filtered river water that can be used for showers but is not safe to drink. Bottled drinking water is provided to all guests.

### Packing

Lightweight clothes

Long slacks and long-sleeved lightweight shirts (to protect against mosquitoes)

Sneakers or hiking boots

Sunglasses

Cap or hat and raingear

Warm clothing is essential between June and August, since occasional "friajes" or cold fronts arrive from southern Patagonia.

Bring only necessary clothing and equipment to the lodge due to weight and space limitations on the boat (10 Kg. / 22 lbs per person).

### And Don't Forget . . .

Sun block

Mosquito repellent

Camera or video camera with waterproof case and plenty of high-speed film

Binoculars

Departure and arrival time and excursions at Inkaterra Reserva Amazonica may be modified without prior notice in accordance to weather.



## QUOTES & REVIEWS

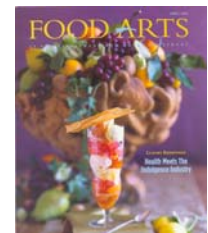
"...there's no better way to see the virgin rainforest, and no place can you spend so long immersed in it..."

National Geographic Adventure – World Class Lodges + Escapes, June/July 2005



"...its 33 casita Inkaterra Reserva Amazonica (on the Madre de Dios River) [were] crafted by locals. Much of the food is sourced locally, and, of course, the staff is primarily area residents ."

Michael Whiteman and Rossana Gold, Food Arts Magazine, April 2005



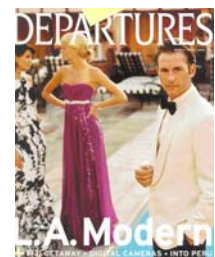
"Looking for the perfect antidote to a day of trekking through the jungle?, Inkaterra Reserva Amazonica pumps posh into the Peruvian Amazon"

Ross Werner, Outside Traveler Magazine, Spring Summer 2005



" Inkaterra Reserva Amazonica offers thatched-roof launches, ferrying guests 45 minutes down the clay-stained Madre de Dios." .... "The screened-in huts are masterpieces of rustic carpentry. Even the twin sinks are carved from stone-hard quintile wood..."

George Rush, Departures Magazine, March 2005



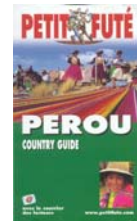
"A huge, traditionally thatched, cone-shaped two-story reception / restaurant / bar / library / relaxation area greets the arriving traveler. Downstairs, beautifully presented, delicious set meals are served from one of the largest and best equipped kitchens in the Southern Amazon. Upstairs, four separate sitting areas complete with couches and private balconies invite conversation and lingering with binoculars to enjoy the fine views and birdlife outside."

Lonely Planet Peru 2004



"...Ideally located, made by natural materials, it is a lodge with perfect comfort. The bungalows have a private bathroom and a small balcony where two hammocks are balancing. The kitchen is good with filtered water. An excellent botanic garden with all kind of plants, from the simplest to most bizarre. The guides are Peruvian and they are excellent..."

Petit Fate Peru 2004



"At last, a jungle lodge that combines comfort, exciting architecture and excellent food with a social and conservation ethic. One doesn't have to "rough it" to experience the wonders of the Amazon responsibly."

Barton Lewis, National Geographic TRAVELER 2002



"A 45-minute boat ride downriver from Puerto Maldonado on the Madre de Dios, this is the most accessible of the jungle lodges... Visitors often see smaller mammals, such as anteaters and agouties. Opportunities for wildlife-viewing include a day trip to Lagos Sandoval, where birds abound... The typical jungle dinner is very good."

Fodor's South America, 2002



"Featuring a large main house and 33 bungalows, this rustic lodge is 15km (9 miles) down the Madre de Dios. Rooms have private bathrooms and terraces with hammocks. There's a good system of trails nearby..."

Formers Peru, 2002



"Harvard professor and biodiversity advocate E.O. Wilson identified an Inkaterra site at Inkaterra Reserva Amazonica as having the world record number of ant species in a single location."

International Finance Corporation, World Bank Group [www.ifc.org](http://www.ifc.org) World Bank Group



## TAMBOPATA & PUERTO MALDONADO

"There are very few places in the world that still shelter extraordinary natural riches. Tambopata in the Peruvian Amazon is one of them."

*Conservation International*

### DESCRIPTION AND LOCATION

The Tambopata National Reserve, located in the southern Peruvian Amazon Basin, is one of the last easily accessible virgin tropical rainforests in the world. The area contains enormous biodiversity and beautiful natural landscapes, spread over a vast 274,690 hectares (678,766 acres).

Considered by Conservation International to be a Global Mega Diversity Hot Spot, the region has remained intact due to limited road access and to the protection offered by several major National Parks, including Manu, Candamo, Tambopata, AmaraKaeri, and Bahuaja Sonene Reserves, with more than 3.6 million protected hectares (9 million acres).

Puerto Maldonado, known as the "Capital of Biodiversity", is the main town of the region and the most important city in the Southern Peruvian Rainforest. Overlooking the confluence of the Tambopata and Madre de Dios Rivers, it is 400 meters (1,312 feet) above sea level and 650 km. (404 miles) from Cusco.



## WEATHER

The weather is extremely tropical. Average temperature is 32°C (89 F), and varies from 25°C (77 F) to 42°C (107 F).

December through March are usually the hottest months, with occasional afternoon rains. Sudden drops in temperature, known as "friajes," or cold fronts, can reduce the temperature to 10°C (50 F).

The Tambopata National Reserve has an extended area of 274,690 hectares (678,766 acres).

## FLORA & FAUNA

Wildlife in Tambopata Reserve is remarkable, from giant and colorful parrots to toucans, macaws, tapirs, tamarins, owls, and the gorgeous Southern Amazon Red Squirrel, as well as thousands of species of butterflies and a large variety of monkeys and otters, four species of felines, and more. Numerous world records are being broken and new species are being discovered constantly. Tambopata Reserve holds the world record for the number of bird species seen in a single day.

## ACCESS

Daily commercial flights connect Puerto Maldonado to Lima (two hours) and Cusco (35 minutes). The lodge is about an hour, 15 km. (9 miles), by outboard dugout canoe from Puerto Maldonado.



**WILDLIFE CHART**

MAMMALS	Probability Observation
Brown Capuchin Monkey (on island)	60%
White-fronted Capuchin Monkey (on island)	60%
Black Spider Monkey	100%
Common Squirrel Monkey (on island)	60%
Black-headed owl Monkey or Night	30%
Saddle-back Tamarin	65%
Red Brocket Deer	25%
Brasilian Tapir	40%
Agouti	40%
Jaguar (tracks)	3%
Three-toed Sloth	30%
Capybara	45%
Southern Amazon Red Squirrel	50%
Collared Peccary	30%
<b>BIRDS</b>	
Blue and Yellow Macaw (not on clay lick)	40%
Scarlet Macaw (not on clay lick)	80%
Red & Green Macaw (not on clay lick)	30%
Blue-headed Macaw (not on clay lick)	20%
Cobalt-winged Parakeet (not on clay lick)	100%
Mealy Parrot	100%
Blue-headed Parrot	30%
Spix's Guan	100%
Jabiru (depending of season – migratory behavior)	60%
Cuvier's Toucan	100%
Snowy Egret	60%
Yellow-rumped Cacique	80%
<b>ANPHIBIANS</b>	
Hyla koechlini (frog)	20%
Bufo marinus (frog)	60%
Ceratophris cornuta	30%
<b>REPTILES</b>	
Spectacled Caiman	80%
Black Caiman	50%
Dwarf Caiman	20%
<b>INVERTEBRATES</b>	
Tarantula	100%
Ants	100%
Butterflies	100%